

# PTFE LINED SYSTEMS

VALVES | PIPES | FITTINGS



a Leading Trusted Brand

[www.chemtef.com](http://www.chemtef.com)



PTFE LINED

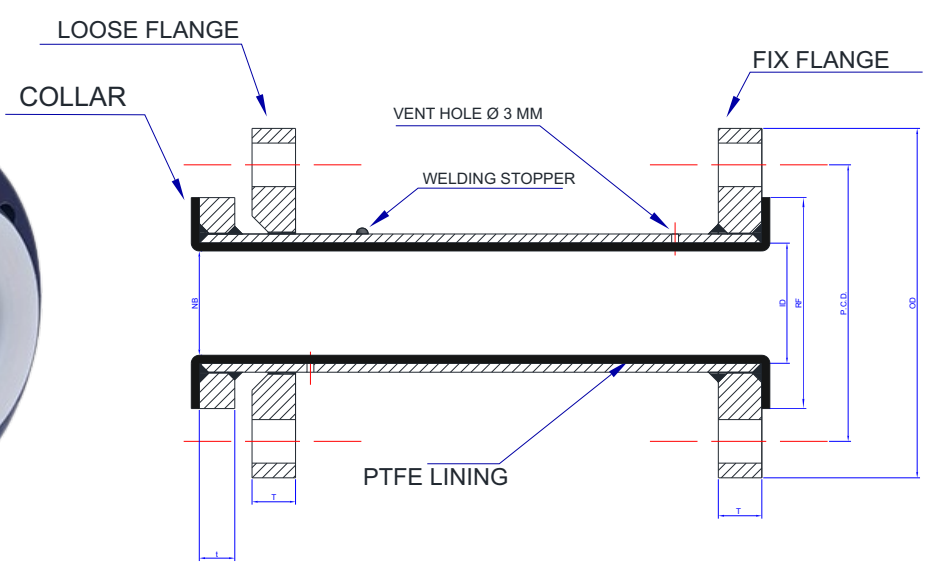
PFA LINED

FEP LINED

An ISO 9001 : 2015  
Certified Company



# PTFE Lined Pipe



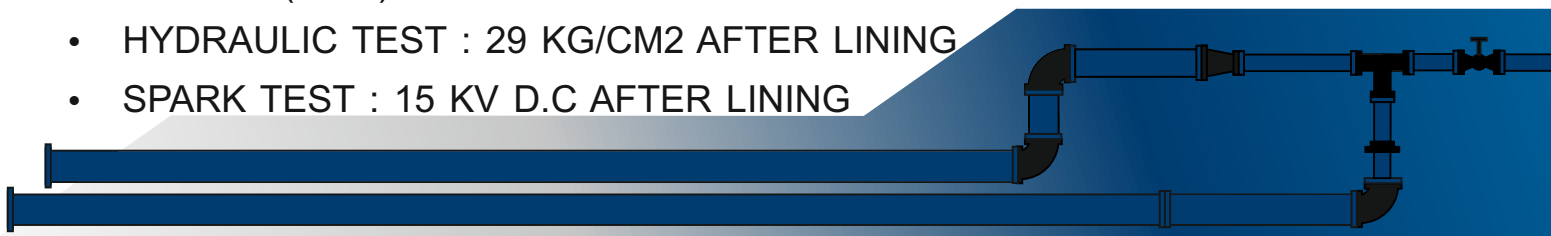
Nominal Bore (NB)		Pipe Internal Dia (ID)	Flange Ø P.C.D.	Ø RF	Ø OD	Lining Thickness
(mm)	(inch)	(±0.2 mm)	(mm)	(mm)	(mm)	(mm)
25	1	26.64	79.4	50.8	108	3.2
40	1.5	40.94	98.4	73	127	3.5
50	2	52.48	120.6	92	152	3.5
80	3	77.92	152.4	127	190.5	3.5
100	4	102.26	190.5	157	228.6	3.8
150	6	154.08	241.3	216	279.4	5.5

## Material Specifications

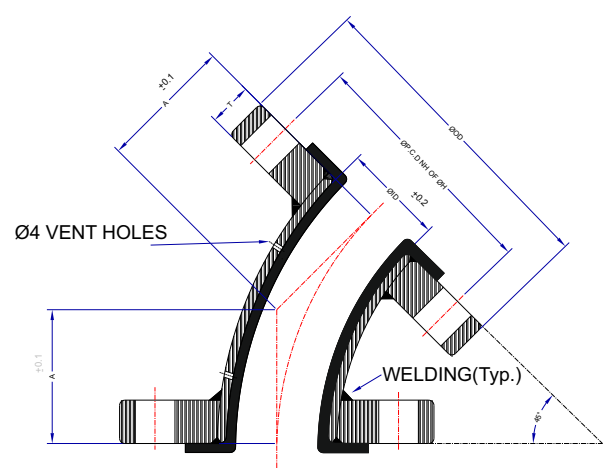
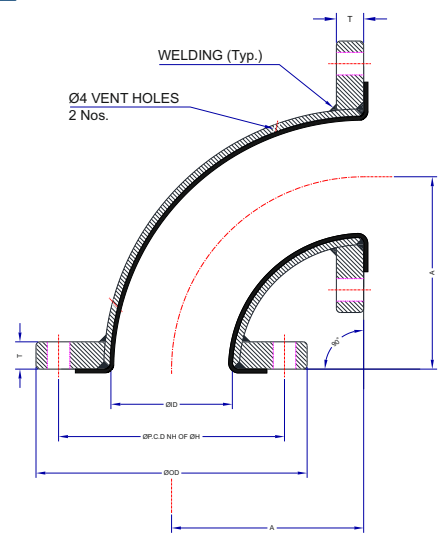
- FLANGE : IS 2062, SOFF FLANGE
- FLANGE RATING : ANSI B 16.5 CLS 150
- PIPE : CS SEAMLESS SCH 40 A 106 GRADE B
- PTFE LINER : ASTM D4894-95

## Test & Inspection Data

- RESINS ARE CONFIRMING TO THE REQUIREMENTS OF ASTM F1545-97 (2003)
- HYDRAULIC TEST : 29 KG/CM2 AFTER LINING
- SPARK TEST : 15 KV D.C AFTER LINING



# PTFE Lined Elbow



Nominal Bore (NB)		90° (A)	45° (A)	Ø OD	Lining Thickness
(mm)	(inch)	(mm)	(mm)	(mm)	(mm)
25	1	85.5	40.5	108	3.2
40	1.5	98.5	53.5	127	3.5
50	2	110.5	59.5	152	3.5
80	3	136	72	190.5	3.5
100	4	161	98	228.6	3.8
150	6	198.5	122.5	279.4	5.5

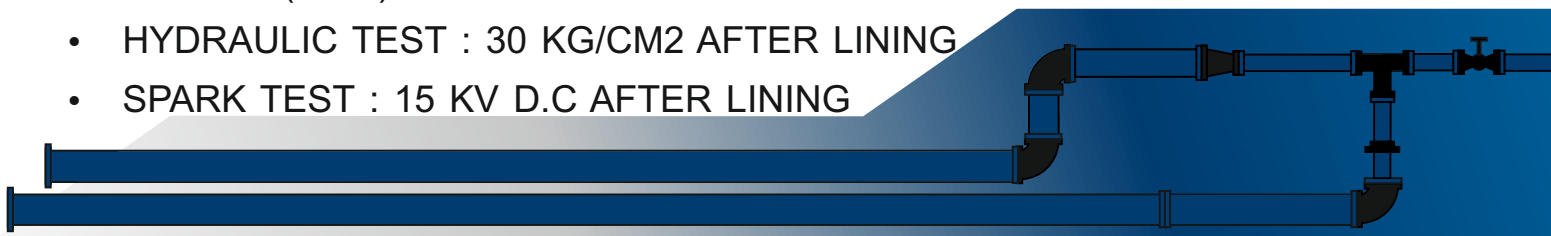


## Material Specifications

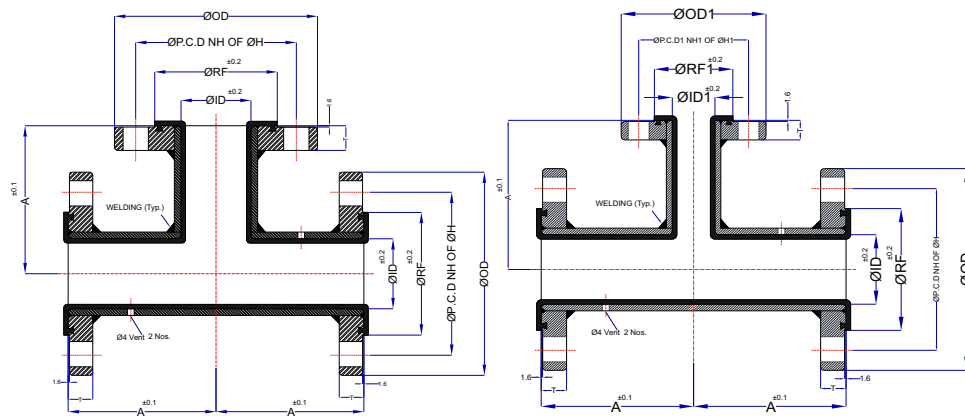
- FLANGE : IS 2062, SOFF FLANGES
- FLANGE RATING : ANSI B 16.5 CLS 150
- SHELL : ASTM A 234, Gr. WPB
- PTFE LINER : ASTM D4894-95

## Test & Inspection Data

- RESINS ARE CONFIRMING TO THE REQUIREMENTS OF ASTM F1545-97 (2003)
- HYDRAULIC TEST : 30 KG/CM2 AFTER LINING
- SPARK TEST : 15 KV D.C AFTER LINING



# PTFE Lined EQUAL TEE & UNEQUAL TEE



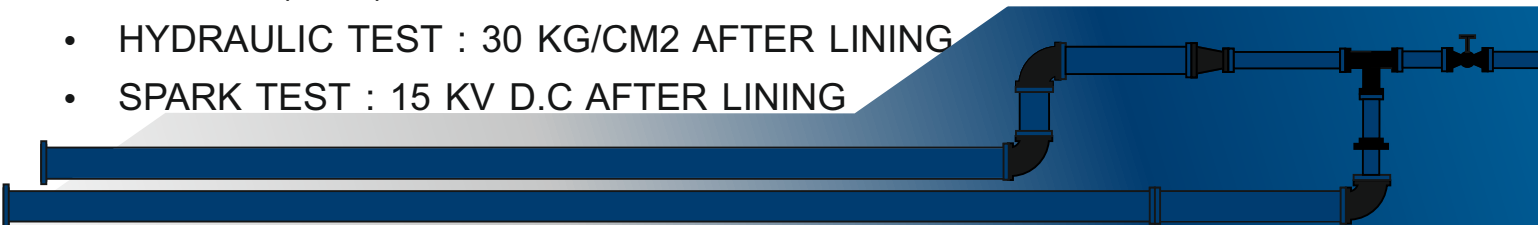
Nominal Bore (NB)		NB1	A
(mm)	(inch)	(mm)	(mm)
25	1	25	85.5
40	1.5	25	98.5
40	1.5	40	98.5
50	2	25	110.5
50	2	40	110.5
50	2	80	110.5
80	3	25	136
80	3	40	136
80	3	50	136
80	3	80	136
100	4	25	161
100	4	40	161
100	4	50	161
100	4	80	161
100	4	100	161
150	6	25	198.5
150	6	40	198.5
150	6	50	198.5
150	6	80	198.5
150	6	100	198.5
150	6	150	198.5

## Material Specifications

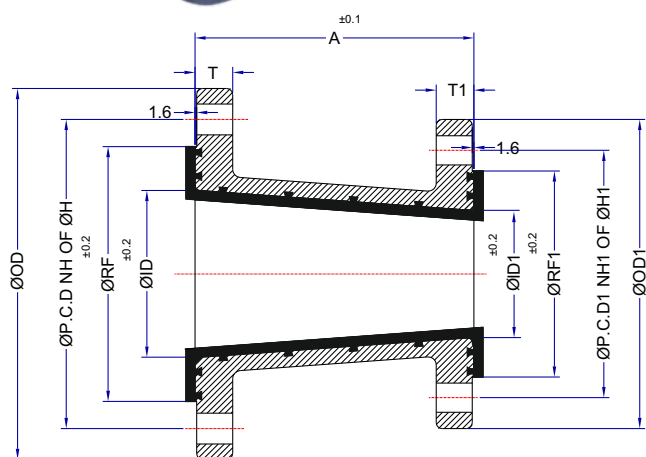
- FLANGE : IS 2062, SORF FLANGES
- FLANGE RATING : ANSI B 16.5 CLS 150
- PIPE : ASTM A 106 Gr. B SEAMLESS PIPE
- PFA LINING : ASTM D3307
- FEP LINING : ASTMD 2116, TYPE IV

## Test & Inspection Data

- RESINS ARE CONFIRMING TO THE REQUIREMENTS OF ASTM F1545-97 (2003)
- HYDRAULIC TEST : 30 KG/CM2 AFTER LINING
- SPARK TEST : 15 KV D.C AFTER LINING



# PFA / FEP Lined CONCENTRIC REDUCER



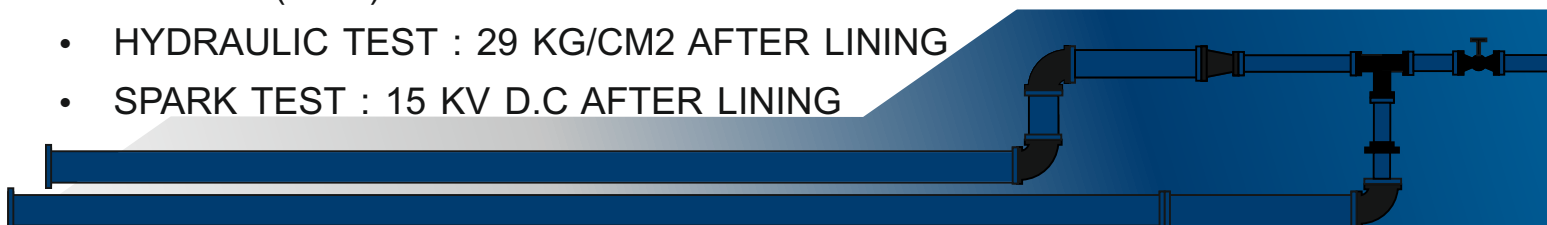
NB1	NB2	A	LINING THICKNESS (mm)
40	25	107	3.8
50	25	120	3.8
50	40	120	3.8
80	25	144.5	4
80	40	144.5	4
80	50	144.5	4
100	25	170.5	4.5
100	40	170.5	4.5
100	50	170.5	4.5
100	80	170.5	4.5
150	25	221	5
150	40	221	5
150	50	221	5
150	80	221	5
150	100	221	5

## Material Specifications

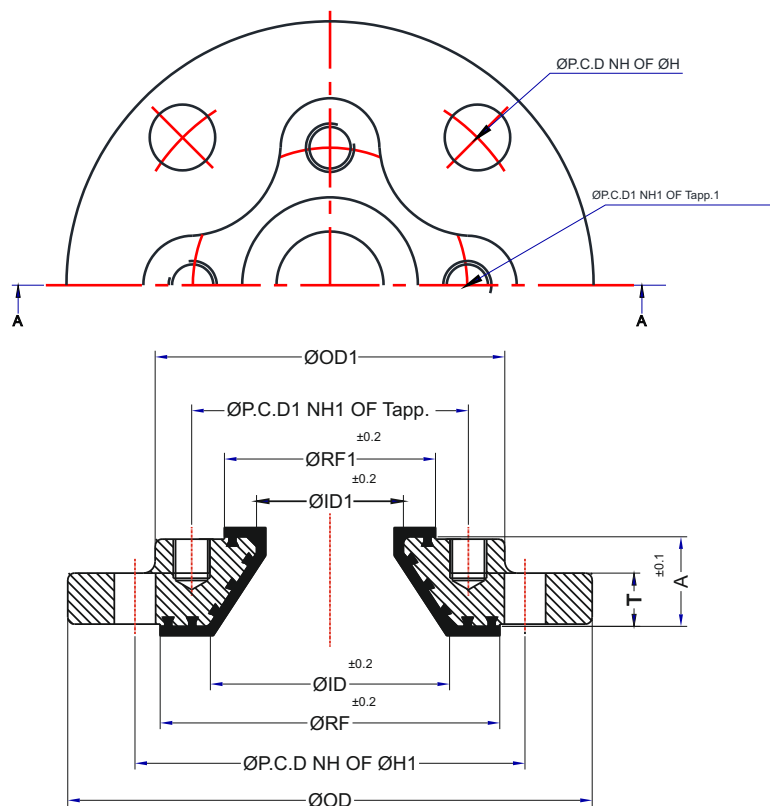
- FLANGE : D.I CASTING, A 395
- PFA LINING : ASTM D3307
- FEP LINING : ASTMD 2116, TYPE IV

## Test & Inspection Data

- RESINS ARE CONFIRMING TO THE REQUIREMENTS OF ASTM F1545-97 (2003)
- HYDRAULIC TEST : 29 KG/CM<sup>2</sup> AFTER LINING
- SPARK TEST : 15 KV D.C AFTER LINING



# PFA / FEP Lined REDUCING FLANGE



NB1	NB2	A	LINING THICKNESS (mm)
40	25	28.0	3.8
50	25	28.0	3.8
50	40	28.0	3.8
80	25	37.5	4
80	40	37.5	4
80	50	37.5	4
100	25	37.5	4.5
100	40	37.5	4.5
100	50	37.5	4.5
100	80	37.5	4.5
150	25	46.0	5
150	40	46.0	5
150	50	46.0	5
150	80	46.0	5
150	100	46.0	5

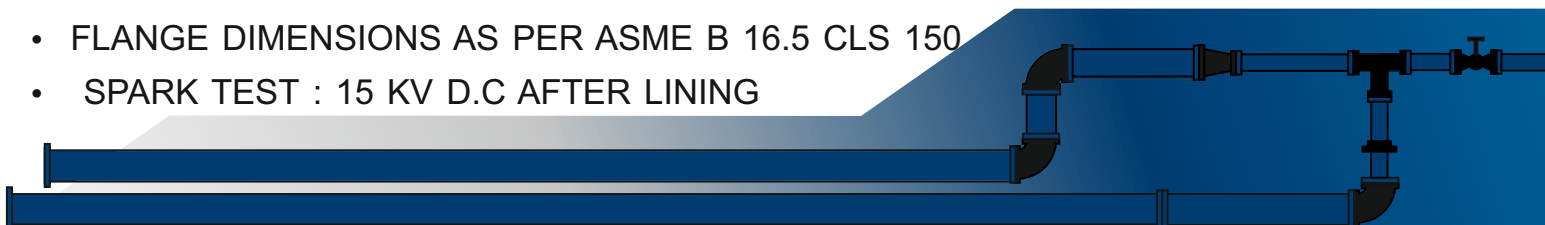


## Material Specifications

- FLANGE : D.I CASTING, A 395
- PFA LINING : ASTM D3307
- FEP LINING : ASTMD 2116, TYPE IV

## Test & Inspection Data

- RESINS ARE CONFIRMING TO THE REQUIREMENTS OF ASTM F1545-97 (2003)
- HYDRAULIC TEST : 30 KG/CM<sup>2</sup> AFTER LINING
- FLANGE DIMENSIONS AS PER ASME B 16.5 CLS 150
- SPARK TEST : 15 KV D.C AFTER LINING





CONTACT PERSON



**Mr. Shiv Patel**  
+91 9879830589



**Mr. Hemant Patel**  
+91 9825029247



+91 9879830589  
+91 9825029247



chemtefindustries@gmail.com



506/4/B G.I.D.C MAKARPURA  
VADODARA, 390010, GUJARAT



www.chemtef.com

**PTFE LINED PRODUCT RANGE**

PTFE LINED PIPES & FITTINGS | VALVES | DIP PIPES | MANWAY COVERS & PROTECTION RINGS

PTFE LINERS | PTFE BUSH | PTFE BELLOWS